



IMAP Crawler for Microsoft Exchange 2003 Administrator's Guide

Release N/A
May 2010
Part Number 010-00760c

This manual supports all releases of the Archive Operating System (AOS) until further notice.

The Mirapoint Software and Mirapoint documentation are Copyright © 1998-2010 Mirapoint Software, Inc. All Rights Reserved. You may not print, copy, reproduce, modify, distribute or display this work in hard copy, electronic, or any other form, in whole or in part, by any electronic, mechanical, or other means, without the prior written consent of Mirapoint Software, Inc., except that you are permitted to make one copy for archival purposes only in connection with the lawful use and operation of this software.

Mirapoint, RazorGate, and the Mirapoint logo are registered trademarks of Mirapoint Software, Inc. Mirapoint Message Server, Mirapoint Directory Server, Mirapoint Operations Console, RazorSafe, DirectPath, WebMail Direct, WebCal Direct, and GroupCal Direct are trademarks of Mirapoint Software, Inc.

Mirapoint integrates third party software programs within the Mirapoint Software, which are subject to their own license terms. If the user does not agree to abide by the applicable license terms for the integrated third party software programs as defined by the Mirapoint Software License Agreement, then you may not install or operate the Mirapoint Software. These software license agreements, including the Mirapoint Software License Agreement, Red Hat End User License Agreement, and Open LDAP Public License, can be viewed at <http://www.mirapoint.com/licenses/thirdparty/eula.php>.

Portions of this product are Copyright © 1982, 1986, 1989, 1991, 1993 the Regents of the University of California. All Rights Reserved.

Portions of this product are Copyright © Dell Inc. Used with permission.

Portions of this product are Copyright © 2008 Red Hat, Inc. All Rights Reserved. The “Red Hat” trademark and the “Shadowman” logo are registered trademarks of Red Hat, Inc. in the U.S. and other countries.

Portions of this product are Copyright © 1997, 1998 FreeBSD, Inc. All Rights Reserved.

Portions of this product are Copyright © 1996-1998 Carnegie Mellon University. All Rights Reserved.

Portions of this product are Copyright © 1997-1998 the Apache Group. All Rights Reserved.

Portions of this product are Copyright © 1987-2006 Larry Wall. All Rights Reserved. See <http://www.perl.org>.

Portions of this product are Copyright © 1990, 1993-1997 Sleepycat Software. All Rights Reserved.

This software is derived in part from the SSLava™ Toolkit, which is Copyright © 1996-1998 by Phaos Technology Corporation. All Rights Reserved.

Portions of this product are Copyright © 1998, 1999, 2000 Bruce Verderaime. All Rights Reserved.

Portions of this product are Copyright © 1999-2003 The OpenLDAP Foundation, Redwood City, California, USA. All Rights Reserved. Permission to copy and distribute verbatim copies of this document is granted.

OpenLDAP is a registered trademark of the OpenLDAP Foundation.

Macintosh is a trademark of Apple Computer, Inc.

Windows, Outlook, Exchange, and Active Directory are trademarks of Microsoft Corporation.

Java and Solaris are trademarks of Sun Microsystems, Inc.

Linux is a registered trademark of Linus Torvalds.

All other trademarks are the property of their respective owners.

OTHER THAN ANY EXPRESS LIMITED WARRANTIES THAT MIRAPPOINT PROVIDES TO YOU IN WRITING, MIRAPPOINT AND MIRAPPOINT'S LICENSORS PROVIDE THE SOFTWARE TO YOU “AS IS” AND EXPRESSLY DISCLAIM ALL WARRANTIES AND/OR CONDITIONS, EXPRESS OR IMPLIED, INCLUDING, BUT NOT LIMITED TO, THE IMPLIED WARRANTIES OF MERCHANTABILITY AND FITNESS FOR A PARTICULAR PURPOSE. IN NO EVENT SHALL MIRAPPOINT'S LICENSORS BE LIABLE FOR ANY DIRECT, INDIRECT, INCIDENTAL, SPECIAL, EXEMPLARY OR CONSEQUENTIAL DAMAGES, HOWEVER CAUSED AND ON ANY THEORY OF LIABILITY (INCLUDING NEGLIGENCE OR OTHER TORT), ARISING IN ANY WAY OUT OF YOUR USE OF THE SOFTWARE, EVEN IF ADVISED OF THE POSSIBILITY OF DAMAGES. MIRAPPOINT'S LIABILITY SHALL BE AS LIMITED IN THE LICENSE AGREEMENT.

Installing and Configuring the IMAP Crawler for Microsoft Exchange 2003



Mirapoint's IMAP Crawler for Exchange 2003 is an administrative utility designed to *crawl* through a user or multiple user's mailbox and archive messages within folders of the mailbox. It uses Exchange 2003's ability to be able to log into a mailbox using credentials of a single user that has been assigned rights to a mail store using the IMAP4 service.

Mirapoint recommends that Network Administrators use this manual as a reference to configure their Exchange mail stores to work with the IMAP Crawler.

Installing the Crawler

There is no installation process for the Crawler, you only need to meet the system requirements.

The Crawler has the following system requirements:

- ◆ Microsoft Windows 2000, XP, 2003/2008, or Vista
- ◆ Microsoft .NET Framework 2.0
- ◆ Microsoft Exchange 2003 Server (Standard or Enterprise Edition) - IMAP4 configured (with no SSL/TLS)

Configuring and Using the Crawler

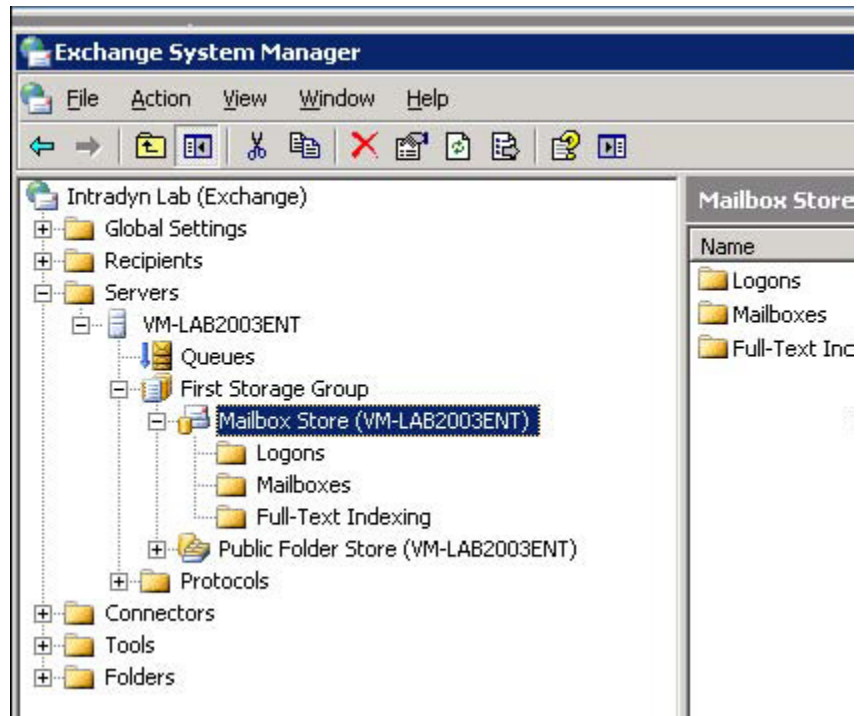
A non-administrator user account is required for the IMAP Crawler. This is due to the fact that, by default, Exchange 2003 implicitly denies the Administrator (or any Domain Administrator account member) the rights to log in to a user's mailbox other than their own. The IMAP Crawler will use this non-administrator account to log in to mailboxes and archive existing mail.

Assigning Crawler Account Permissions

The user account needs *receive as* and *send as* permissions on each Exchange mail store that contains user mailboxes. Mirapoint recommends selecting/creating a user account that does not normally have these permissions on the mail store, so it is easier to remove those permissions once the crawl has completed.

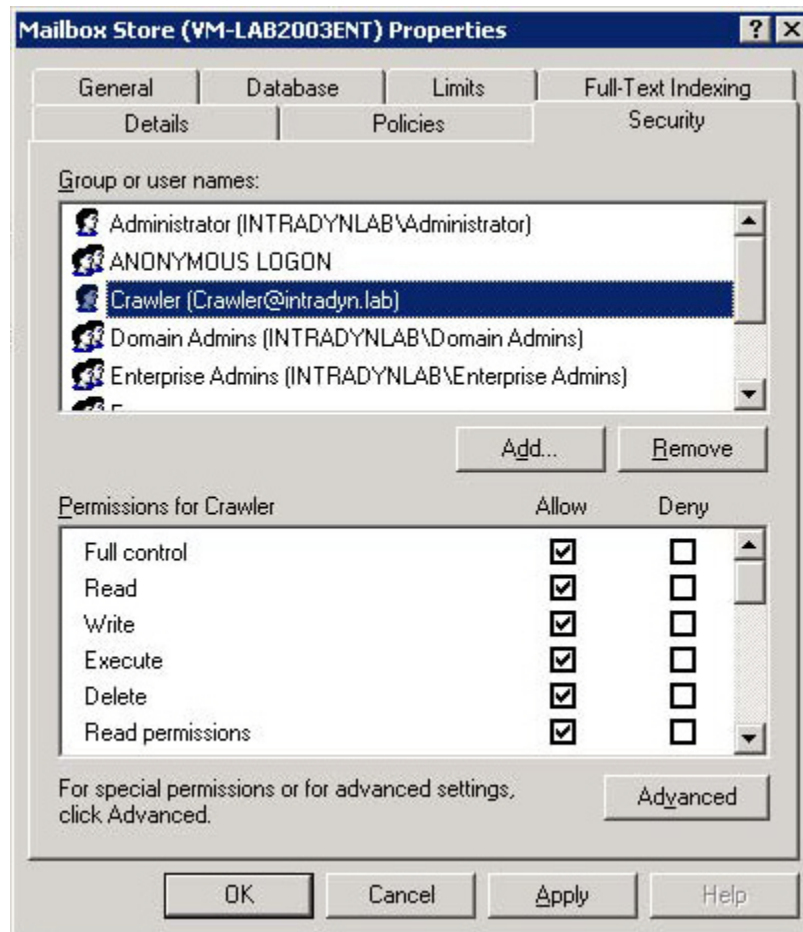
To assign crawler user account permissions:

1. From the Exchange System Manager (ESM), navigate to the **Mailbox Store**, then right-click and select **Properties**.



2. Click the **Security** tab.
3. Click **Add**.

4. Select the account that you are going to use for the Crawler and make sure that **Full Control** is set for the permissions.



5. Repeat this procedure for each mail store if you have Exchange 2003 Server Enterprise Edition and have multiple mail stores.

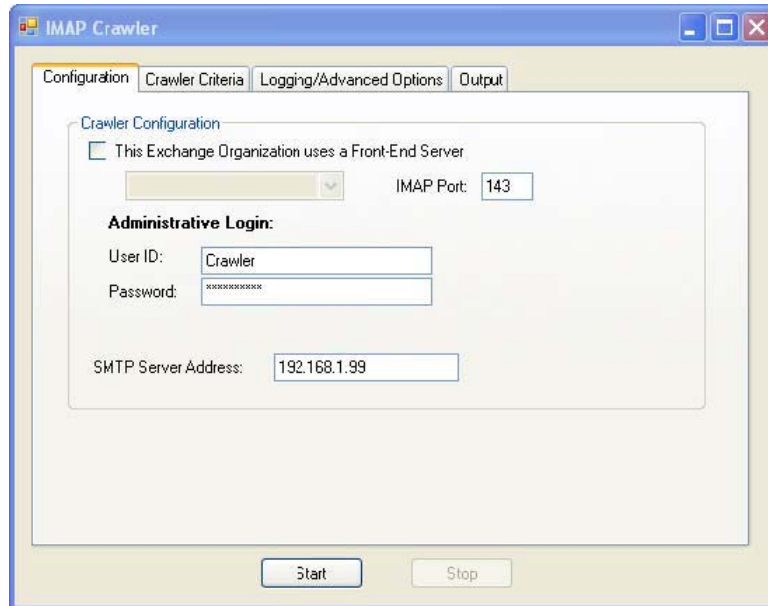
Setting User Account and Front-End Server Options

The IMAP Crawler is Active Directory dependent. It uses Active Directory to obtain information about your Exchange environment and user mailbox information. The Crawler determines which Exchange servers in your environment are to query the Active Directory global group, **Exchange Domain Servers**.

Being a group, it can contain not only computer objects but also user objects. Some administrators erroneously place user account objects in this group in an attempt to fix an issue and do not remove those accounts. The Crawler does not filter out user objects when querying this group and subsequently will display all members of this global group in the application's drop-down menus.

To configure the crawler:

1. Launch the IMAP Crawler application.
2. On the **Configuration** tab, complete the following steps:



- a. If necessary, select the **This Exchange Organization uses a Front-End Server** checkbox, and select the server front-end from the drop-down menu.

If your Exchange organization contains a front-end server (i.e., OWA, OMA, IMAP or POP3, or external email handler) but no user accounts, then you can specify that server here. Specifying a front-end server will force the Crawler to use that server for all IMAP communications for all accounts; regardless of what mail store the mailbox is located on.



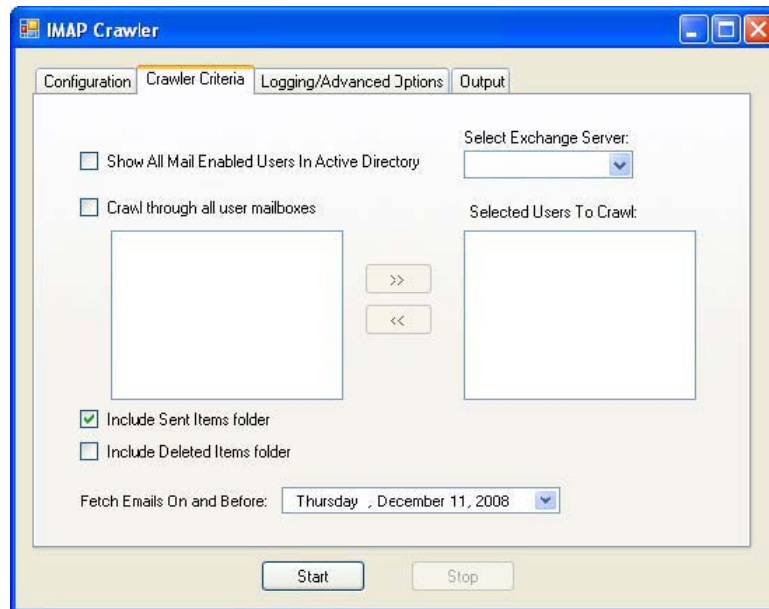
This is the recommended method for organizations that have multiple mail servers.

- b. In the **IMAP Port** text field, type in the IMAP port number. The default is 143.
- c. Under **Administrative Login**, in the **User ID** text field type in the IMAP Crawler user account
- d. In the **Password** text field, type the password for that user account
- e. In the **SMTP Server Address** text field, type in the IP address of the RazorSafe appliance.

Setting Crawler Criteria Options

The **Crawler Criteria** tab is where you set what mailboxes to crawl, as well as the date criteria. If you select **Show All Mail Enabled Users in Active Directory**, the Crawler will query for and display all mailbox-enabled users in the directory. Selecting a server name from the **Select Exchange Server** drop-down menu will display only those users *homed* on that particular server.

Figure 1 Crawler Criteria tab



If a front-end server was *not* specified on the **Configuration** tab, then the Crawler will query the user account property, **Exchange Home Server**, for the appropriate server to connect to using IMAP.

If IMAP is not enabled on all Exchange servers containing mailboxes you wish to crawl, then the Crawler will not be able to connect and retrieve those messages. This does not apply to front-end/back-end configurations where the front-end acts as an IMAP proxy.

You have the option of selecting the user accounts you wish to crawl, or you can select **Crawl through all user mailboxes**. By default, the **Include Sent Items folder** checkbox is selected and **Include Deleted Items folder** checkbox is left unselected. This is because a user's Deleted Items folder often contains spam (i.e., junk mail) or messages that have a potential virus in them.

The crawler uses the date selected from the **Fetch Emails On and Before** drop-down menu to crawl all emails on and before the date specified, for all folders.

Setting Crawler Logging and Advanced Options

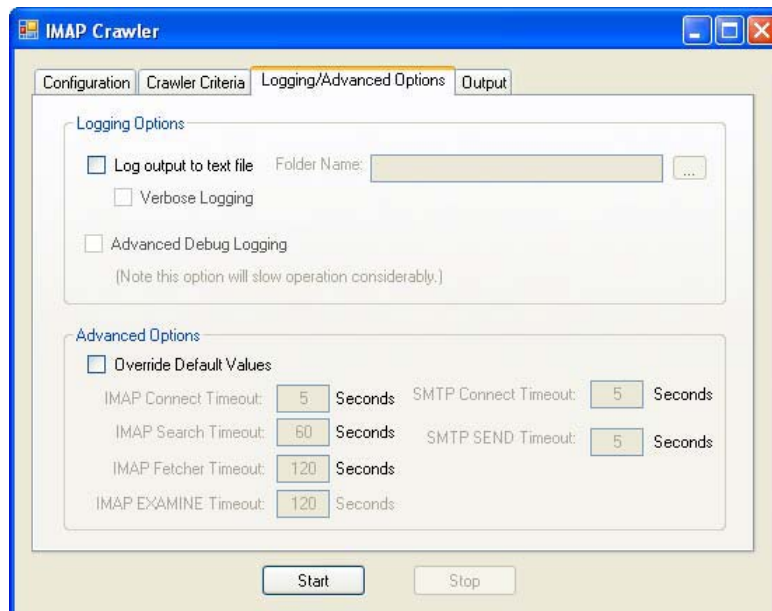
To have the Crawler create a log file of the mailboxes crawled, select the **Log output to text file** checkbox and type in the directory path where the Crawler is to write these logs. You also can select the **Verbose Logging** checkbox to log individual user's sessions.

For advanced troubleshooting, select the **Advanced Debug Logging** checkbox. This feature will log *all* emails and attachments (base-64 encoded) into the mailbox log file.



Advanced logging can create an extremely large log file depending on the amount of emails and attachments there are in the mailbox. It is not recommended to use this option unless being assisted by Mirapoint Technical Support.

Figure 2 Logging/Advanced Options Tab

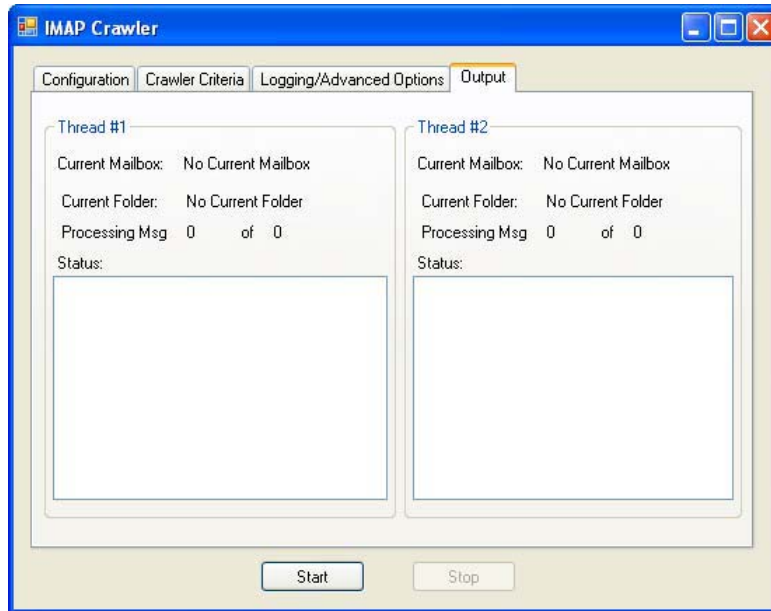


The **Advanced Options** section is used in the event that the Exchange server is heavily utilized. You can adjust the default timeout values IMAP and SMTP operations. However, these options should only be used with the assistance of Mirapoint Technical Support.

Viewing Crawler Output

When you are ready to begin the process, click **Start**. The **Output** tab will display the progress of the current mailboxes being crawled. The Crawler is a multi-threaded application, and it is capable of crawling through two mailboxes at once. The list of selected mailboxes to crawl is split into two separate threads. One thread can complete sooner than the other depending on the amount of mail/attachments there are in any given mailbox.

Figure 3 Output Tab



Skipped Folders

The Crawler will skip the following mail folders:

- ◆ Tasks
- ◆ Drafts
- ◆ Sync Issues
- ◆ Outbox
- ◆ Calendar
- ◆ Journal
- ◆ Junk E-Mail
- ◆ Notes
- ◆ Contacts
- ◆ Public Folders
- ◆ Quarantine

It will also skip any mail folder that contains the following words in the folder name:

- ◆ SPAM
- ◆ Calendar
- ◆ Contacts
- ◆ Deleted Items
- ◆ RSS Feeds
- ◆ Sync Issues

MIRAPOINT SOFTWARE, INC. SOFTWARE LICENSE AGREEMENT

PLEASE READ THIS SOFTWARE LICENSE AGREEMENT (“LICENSE”) CAREFULLY BEFORE DOWNLOADING OR OTHERWISE USING THE SOFTWARE. BY DOWNLOADING, INSTALLING OR USING THE SOFTWARE, YOU ARE AGREEING TO BE BOUND BY THE TERMS OF THIS SOFTWARE LICENSE AGREEMENT.

IF YOU DO NOT AGREE TO THE TERMS OF THIS LICENSE, YOU ARE NOT AUTHORIZED TO DOWNLOAD OR USE THIS SOFTWARE.

1. Scope. This License governs you (“User”) and your use of any and all computer software, any printed or electronic documentation, or other code, whether on disk, in read only memory, or on any other media (collectively, the “Mirapoint Software”) provided to you as part of or with a Mirapoint Product.
2. License, not Sale, of Mirapoint Software. The Mirapoint Software is licensed, not sold, to User by MIRAPOINT SOFTWARE, INC. or its affiliate, if any (“Mirapoint”). USER MAY OWN THE MEDIA ON WHICH THE MIRAPOINT SOFTWARE IS PROVIDED, BUT MIRAPOINT AND/OR MIRAPOINT’S LICENSOR(S) RETAIN TITLE TO THE MIRAPOINT SOFTWARE. The Mirapoint Software installed on the Mirapoint Product and any copies which this License authorizes the User to make are subject to this License.
3. Permitted Uses. This License allows User to use the pre-installed Mirapoint Software exclusively on the Mirapoint Product on which the Mirapoint Software has been installed. With respect to Mirapoint Software [identified by Mirapoint as the “administrative application”] that has not been preinstalled on the Mirapoint Product, this License allows you to copy, use and install such Mirapoint Software on one or more administrative workstations on which the Mirapoint Software is supported. User may make copies of the Mirapoint Software in machine-readable form for backup purposes only, provided that such backup copy must include all copyright and other proprietary information and notices contained on the original.
4. Proprietary Rights; Restrictions on Use. User acknowledges and agrees that the Mirapoint Software is copyrighted and contains materials that are protected by copyright, trademark, trade secret and other laws and international treaty provisions relating to proprietary rights. User may not remove, deface or obscure any of Mirapoint’s or its suppliers’ proprietary rights notices on or in the Mirapoint Software or on output generated by the Mirapoint Software. Except as permitted by applicable law and this License, you may not copy, decompile, reverse engineer, disassemble, modify, rent, lease, loan, distribute, assign, transfer, or create derivative works from the Mirapoint Software. Your rights under this License will terminate automatically without notice from Mirapoint if you fail to comply with any term(s) of this License. User acknowledges and agrees that any unauthorized use, transfer, sublicensing or disclosure of the Mirapoint Software may cause irreparable injury to Mirapoint, and under such circumstances, Mirapoint shall be entitled to equitable relief, without posting bond or other security, including but not limited to, preliminary and permanent injunctive relief.
5. Third Party Programs. Mirapoint integrates third party software programs with the Mirapoint Software which are subject to their own license terms. These license terms can be viewed at <http://www.mirapoint.com/licenses/thirdparty/eula.php>. If User does not agree to abide by the applicable license terms for the integrated third party software programs, then you may not install the Mirapoint Software.
6. Disclaimer of Warranty on Mirapoint Software. User expressly acknowledges and agrees that use of the Mirapoint Software is at your sole risk. Unless Mirapoint otherwise provides an express warranty with respect to the Mirapoint Software, the Mirapoint Software is provided “AS IS” and without warranty of any kind and Mirapoint and Mirapoint’s licensor(s) (for the purposes of provisions 5 and 6, Mirapoint and Mirapoint’s licensor(s) shall be collectively referred to as “Mirapoint”) EXPRESSLY DISCLAIM ALL WARRANTIES AND/OR CONDITIONS, EXPRESS OR IMPLIED, INCLUDING, BUT NOT LIMITED TO, THE IMPLIED WARRANTIES OF MERCHANTABILITY AND FITNESS FOR A PARTICULAR PURPOSE. IN ADDITION, MIRAPOINT DOES NOT WARRANT THAT THE MIRAPOINT SOFTWARE WILL MEET YOUR REQUIREMENTS, OR THAT THE MIRAPOINT SOFTWARE WILL RUN UNINTERRUPTED OR BE ERROR-FREE, OR THAT DEFECTS IN THE MIRAPOINT SOFTWARE WILL BE CORRECTED. SOME JURISDICTIONS DO NOT ALLOW THE EXCLUSION OF IMPLIED WARRANTIES OR OTHER DISCLAIMERS, SO THE ABOVE EXCLUSION OR DISCLAIMERS MAY NOT APPLY TO YOU.
7. Limitation of Liability. UNDER NO CIRCUMSTANCES, INCLUDING NEGLIGENCE, SHALL MIRAPOINT BE LIABLE FOR ANY INCIDENTAL, SPECIAL, INDIRECT OR CONSEQUENTIAL DAMAGES ARISING OUT OF OR RELATING TO THIS LICENSE. FURTHER, IN NO EVENT SHALL MIRAPOINT’S LICENSORS BE LIABLE FOR ANY DIRECT, INDIRECT, INCIDENTAL, SPECIAL, EXEMPLARY OR CONSEQUENTIAL DAMAGES (INCLUDING BUT NOT LIMITED TO PROCUREMENT OF SUBSTITUTE GOODS OR SERVICES, LOSS OF USE, DATA OR PROFITS OR INTERRUPTION), HOWEVER CAUSED AND ON ANY THEORY OF LIABILITY (INCLUDING NEGLIGENCE OR OTHER TORT), ARISING IN ANY WAY OUT OF YOUR USE OF THE SOFTWARE OR THIS AGREEMENT, EVEN IF ADVISED OF THE POSSIBILITY OF DAMAGES. SOME JURISDICTIONS DO NOT ALLOW THE LIMITATION OF INCIDENTAL OR CONSEQUENTIAL DAMAGES SO THIS LIMITATION MAY NOT APPLY TO YOU. In no event shall

Mirapoint's total liability to you for all damages exceed the amount paid for this License to the Mirapoint Software.

8. Export Control. As required by the laws of the United States and other countries, User represents and warrants that it: (a) understands that the Mirapoint Software and its components may be subject to export controls under the U.S. Commerce Department's Export Administration Regulations ("EAR"); (b) is not located in a prohibited destination country under the EAR or U.S. sanctions regulations (currently Cuba, Iran, Iraq, North Korea, Sudan and Syria, subject to change as posted by the United States government); (c) will not export, re-export, or transfer the Mirapoint Software to any prohibited destination or persons or entities on the U.S. Bureau of Industry and Security Denied Parties List or Entity List, or the U.S. Office of Foreign Assets Control list of Specially Designated Nationals and Blocked Persons, or any similar lists maintained by other countries, without the necessary export license(s) or authorization(s); (d) will not use or transfer the Mirapoint Software for use in connection with any nuclear, chemical or biological weapons, missile technology, or military end-uses where prohibited by an applicable arms embargo, unless authorized by the relevant government agency by regulation or specific license; (e) understands and agrees that if it is in the United States and exports or transfers the Mirapoint Software to eligible users, it will, to the extent required by EAR Section 740.17(e), submit semi-annual reports to the Commerce Department's Bureau of Industry and Security, which include the name and address (including country) of each transferee; and (f) understands that countries including the United States may restrict the import, use, or export of encryption products (which may include the Mirapoint Software and the components) and agrees that it shall be solely responsible for compliance with any such import, use, or export restrictions.

9. Miscellaneous. This License will be governed by and construed in accordance with the laws of the State of California, U.S.A., without reference to its conflict of law principles. If a court of competent jurisdiction finds any provision of this License invalid or unenforceable, that provision will be amended to achieve as nearly as possible the same economic effect as the original provision and the remainder of this License will remain in full force. Failure of a party to enforce any provision of this License shall not waive such provision or of the right to enforce such provision. This License sets forth the entire agreement between the parties with respect to your use of the Mirapoint Software and supersedes all prior or contemporaneous representations or understandings regarding such subject matter. No modification or amendment of this License will be binding unless in writing and signed by an authorized representative of Mirapoint. You will not export, re-export, divert, transfer or disclose, directly or indirectly, the Mirapoint Software, Mirapoint Products or any technical information and materials supplied under this Agreement without complying strictly with the export control laws and all legal requirements in the relevant jurisdiction, including without limitation, obtaining the prior approval of the U.S. Department of Commerce.
